

# SPINO [speen-OH]

MANUFACTURER: Skandiform | DESIGNER: Stefan Borselius



The modular sofa system is fluid in form and artful in function. Edginess with a modern flair, the slender curved angles of Spino effortlessly balance comfort and sophistication. Options consist of straight or curved modules with a narrow back, broad back, backless, 90 degree modules, or modules with a white laminate tabletop. The base comes standard in chrome, white, or black steel and offers a slender support foot for additional support.

Spino is eco-friendly. For sustainability certifications, refer to the [product page](#).

MODULAR SOFA	ITEM #	DESCRIPTION	W	D	H	SH	COM*	A/COL*	B	C	D	E	L
	19-511-SA-352	uph. straight seat, steel base	24"	26.5"	18.25"	-	\$2,578	\$2,690	\$2,831	\$2,921	\$3,011	\$3,100	\$3,643
	19-511-SA-353	right or left end module**	24"	26.5"	18.25"	-	\$2,578	\$2,690	\$2,831	\$2,921	\$3,011	\$3,100	\$3,643
	19-511-SA-356	uph. straight seat w/ back, steel base	24"	26.5"	32.75"	18.25"	\$3,377	\$3,542	\$3,747	\$3,880	\$4,012	\$4,143	\$5,070
	19-511-SA-357R	right end module**	24"	26.5"	32.75"	18.25"	\$3,377	\$3,542	\$3,747	\$3,880	\$4,012	\$4,143	\$5,070
	19-511-SA-358L	left end module**	24"	26.5"	32.75"	18.25"	\$3,377	\$3,542	\$3,747	\$3,880	\$4,012	\$4,143	\$5,070
	19-511-SA-340	uph. curved seat, steel base	24"	23"	18.25"	-	\$2,392	\$2,518	\$2,678	\$2,779	\$2,882	\$2,984	\$3,305
	19-511-SA-341R	right end module**	24"	23"	18.25"	-	\$2,392	\$2,518	\$2,678	\$2,779	\$2,882	\$2,984	\$3,305
	19-511-SA-342L	left end module**	24"	23"	18.25"	-	\$2,392	\$2,518	\$2,678	\$2,779	\$2,882	\$2,984	\$3,305
	19-511-SA-343	uph. outer curved seat w/ narrow back, steel base	24"	26.5"	32.75"	18.25"	\$3,046	\$3,233	\$3,466	\$3,616	\$3,767	\$3,916	\$4,353
	19-511-SA-344R	right end module**	24"	26.5"	32.75"	18.25"	\$3,046	\$3,233	\$3,466	\$3,616	\$3,767	\$3,916	\$4,353
	19-511-SA-345L	left end module**	24"	26.5"	32.75"	18.25"	\$3,046	\$3,233	\$3,466	\$3,616	\$3,767	\$3,916	\$4,353
	19-511-SA-346	uph. inner curved seat w/ wide back, steel base	25.25"	26.5"	32.75"	18.25"	\$3,165	\$3,378	\$3,645	\$3,816	\$3,987	\$4,158	\$4,589
	19-511-SA-347R	right end module**	25.25"	26.5"	32.75"	18.25"	\$3,165	\$3,378	\$3,645	\$3,816	\$3,987	\$4,158	\$4,589
	19-511-SA-348L	left end module**	25.25"	26.5"	32.75"	18.25"	\$3,165	\$3,378	\$3,645	\$3,816	\$3,987	\$4,158	\$4,589
	19-511-SA-311	uph. 90 degree outer curved seat, steel base	39.5"	22.25"	18.25"	-	\$2,635	\$2,786	\$2,977	\$3,098	\$3,219	\$3,340	\$3,935
	19-511-SA-312R	right end module**	39.5"	22.25"	18.25"	-	\$2,635	\$2,786	\$2,977	\$3,098	\$3,219	\$3,340	\$3,935
	19-511-SA-313L	left end module**	39.5"	22.25"	18.25"	-	\$2,635	\$2,786	\$2,977	\$3,098	\$3,219	\$3,340	\$3,935

# SPINO [speen-OH]

MANUFACTURER: Skandiform | DESIGNER: Stefan Borselius



The modular sofa system is fluid in form and artful in function. Edginess with a modern flair, the slender curved angles of Spino effortlessly balance comfort and sophistication. Options consist of straight or curved modules with a narrow back, broad back, backless, 90 degree modules, or modules with a white laminate tabletop. The base comes standard in chrome, white, or black steel and offers a slender support foot for additional support.

Spino is eco-friendly. For sustainability certifications, refer to the [product page](#).

MODULAR SOFA	ITEM #	DESCRIPTION	W	D	H	SH	COM*	A/COL*	B	C	D	E	L
	19-511-SA-322	uph. 90 degree outer curved seat w/ narrow back, steel base	39.5"	27.25"	32.75"	18.25"	\$3,235	\$3,397	\$3,596	\$3,727	\$3,853	\$3,981	\$5,078
	19-511-SA-323	right end module**	39.5"	27.25"	32.75"	18.25"	\$3,235	\$3,397	\$3,596	\$3,727	\$3,853	\$3,981	\$5,078
	19-511-SA-324	left end module**	39.5"	27.25"	32.75"	18.25"	\$3,235	\$3,397	\$3,596	\$3,727	\$3,853	\$3,981	\$5,078

	19-511-SA-331	uph. 90 degree inner curved seat w/ wide back, steel base	44.25"	27.25"	32.75"	18.25"	\$4,203	\$4,454	\$4,764	\$4,965	\$5,162	\$5,361	\$7,489
	19-511-SA-332	right end module**	44.25"	27.25"	32.75"	18.25"	\$4,203	\$4,454	\$4,764	\$4,965	\$5,162	\$5,361	\$7,489
	19-511-SA-333	left end module**	44.25"	27.25"	32.75"	18.25"	\$4,203	\$4,454	\$4,764	\$4,965	\$5,162	\$5,361	\$7,489

	ITEM #	DESCRIPTION	DESIGN NOTE	W	D	H	SH	COM*	A/COL*	B	C	D	E	L
	19-511-LB-640	uph. curved module w/ laminate top, steel base	table module only available as a middle unit	24"	23"	18.25"	-	\$2,369	\$2,451	\$2,555	\$2,621	\$2,687	\$2,752	\$3,336

ACCESSORIES	ITEM #	DESCRIPTION	DESIGN NOTE	PRICE
	19-511-SA-359	steel support leg*** compatible w/ straight modules	compatible w/ modules: 19-511-SA-352, 19-511-SA-353, 19-511-SA-356, 19-511-SA-357R, 19-511-SA-358L	\$493

	19-511-SA-349	steel support leg*** compatible w/ curved modules	compatible w/ modules: 19-511-SA-340, 19-511-SA-341R, 19-511-SA-342L, 19-511-SA-343, 19-511-SA-344R, 19-511-SA-345L, 19-511-SA-346, 19-511-SA-347R, 19-511-SA-348L, 19-511-LB-640	\$493
--	---------------	---	---	-------





# SPINO [speen-OH]

MANUFACTURER: Skandiform | DESIGNER: Stefan Borselius



The modular sofa system is fluid in form and artful in function. Edginess with a modern flair, the slender curved angles of Spino effortlessly balance comfort and sophistication. Options consist of straight or curved modules with a narrow back, broad back, backless, 90 degree modules, or modules with a white laminate tabletop. The base comes standard in chrome, white, or black steel and offers a slender support foot for additional support.

Spino is eco-friendly. For sustainability certifications, refer to the [product page](#).

ACCESSORIES	ITEM #	DESCRIPTION	Dia.	COM*	A/COL*	B	C	D	E	L	
	19-511-SA-619	uph. circular cap	6.5"	\$405	\$436	\$472	\$495	\$519	\$542	\$493	
	19-511-SA-622	uph. rectangular cap	L 24"	D 6.5"	\$458	\$529	\$619	\$677	\$734	\$791	\$595
	19-511-SA-623	uph. rectangular end cap, 1 circular end	L 27.5"	D 6.5"	\$464	\$540	\$634	\$695	\$756	\$816	\$595
	19-511-SA-624	uph. rectangular cap, 2 circular ends	L 30.75"	D 6.5"	\$551	\$631	\$731	\$796	\$859	\$924	\$683

## HOW TO ORDER

example:	<b>PRODUCT</b>	Spino - modular sofa
	<b>ITEM #</b>	19-511-SA-352
	<b>DESCRIPTION</b>	uph. straight seat, steel base
	<b>UPHOLSTERY</b>	grade A - Gabriel Focus Melange - 60309
	<b>BASE FINISH</b>	chrome 19-S3700
	<b>ACCESSORIES</b>	N/A
	<i>The above information is needed per each module ordered.</i>	





## NOTES

- \*COM/COL - **set up fee, net per selection** \$200
- \*\*right/left end module - End modules come with one connection point and the other side fully upholstered.  
Module orientation is shown from the approach side depicted in the line drawing next to the description.  
Right/left end modules are based on the floor plan provided.
- \*\*\*steel support leg - Support legs are determined based on the floor plan provided. Legs ship installed on pre-determined modules. Installation layout should follow the pre-determined configuration for stability.

**MODULAR CONFIGURATIONS** - Please provide a floor plan for modular configurations. All modular configurations require a minimum of 6 modules per system, 4 modules for the tulip shape (shown on the configurations page, example 2) for stability. Contact your sales representative for information and pricing - [info@scandinavianspaces.com](mailto:info@scandinavianspaces.com)

Scandinavian Spaces reserves the right to amend any pricing/information.

## MATERIALS + FINISHES chart 19

steel base			laminate top
			
19-S3700 chrome	19-S3721 traffic white RAL 9016	19-S3722 jet black RAL 9005	19-L7080 white laminate

# SPINO [speen-OH]

**MANUFACTURER:** Skandiform | **DESIGNER:** Stefan Borselius

The modular sofa system is fluid in form and artful in function. Edginess with a modern flair, the slender curved angles of Spino effortlessly balance comfort and sophistication. Options consist of straight or curved modules with a narrow back, broad back, backless, 90 degree modules, or modules with a white laminate tabletop. The base comes standard in chrome, white, or black steel and offers a slender support foot for additional support.

Spino is eco-friendly. For sustainability certifications, refer to the [product page](#).



## CONFIGURATIONS

example 1:

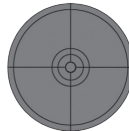


PLAN VIEW



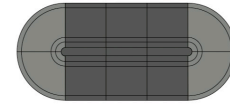
- (3) 19-511-SA-356 uph. straight seat w/ back
- (1) 19-511-SA-357R uph. straight seat w/ back, right end module
- (1) 19-511-SA-358L uph. straight seat w/ back, left end module
- (3) 19-511-SA-359 steel support leg compatible w/ straight modules

example 2:



- (4) 19-511-SA-322 uph. 90 degree outer curved seat w/ narrow back
- (1) 19-511-SA-619 uph. circular cap

example 3:

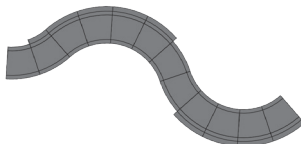


- (6) 19-511-SA-356 uph. straight seat w/ back
- (4) 19-511-SA-322 uph. 90 degree outer curved seat w/ narrow back
- (1) 19-511-SA-622 uph. rectangular cap
- (2) 19-511-SA-623 uph. rectangular cap, 1 circular end

example 4:

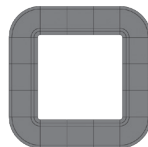


PLAN VIEW



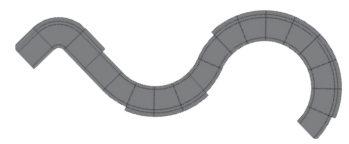
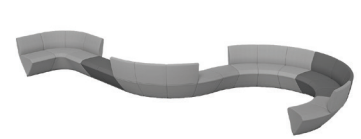
- (2) 19-511-SA-340 uph. outer curved seat
- (1) 19-511-SA-342L uph. curved seat, left end module
- (1) 19-511-SA-348L uph. inner curved seat w/ wide back, left end module
- (7) 19-511-SA-346 uph. inner curved seat w/ wide back
- (1) 19-511-SA-343 uph. outer curved seat w/ narrow back
- (4) 19-511-SA-349 steel support leg compatible w/ inner curved modules

example 5:



- (12) 19-511-SA-356 uph. straight seat w/ back
- (4) 19-511-SA-322 uph. 90 degree outer curved seat w/ narrow back

example 6:



- (1) 19-511-SA-352 uph. straight seat
- (1) 19-511-SA-356 uph. straight seat w/ back
- (1) 19-511-SA-358L uph. straight seat w/ back, left end module
- (3) 19-511-SA-340 uph. curved seat
- (1) 19-511-SA-341R uph. curved seat, right end module
- (10) 19-511-SA-346 uph. inner curved seat w/ wide back
- (1) 19-511-SA-331 uph. 90 degree inner curved seat w/ wide back
- (7) 19-511-SA-349 steel support leg compatible w/ inner curved
- (2) 19-511-SA-359 steel support leg compatible w/ straight modules

# SPINO [speen-OH]

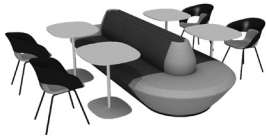
MANUFACTURER: Skandiform | DESIGNER: Stefan Borselius

The Spino collection's recommended pairings are arranged by size and dimensions. The item numbers listed within the examples shown are specified in standard steel. Please reference the corresponding product pages for additional finish options.

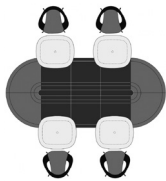


## RECOMMENDED TABLE PAIRINGS

example 1:

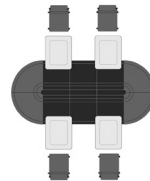
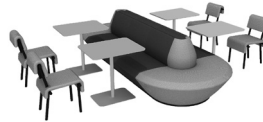


PLAN VIEW



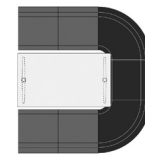
- (6) 19-511-SA-356 Spino - uph. straight seat w/ back
- (4) 19-511-SA-322 Spino - uph. 90 degree outer curved seat w/ narrow back
- (1) 19-511-SA-622 Spino - uph. rectangular cap
- (2) 19-511-SA-623 Spino - uph. rectangular cap, 1 circular end
- (4) 19-342-1980\* Matsumoto - ash top w/ steel base
- (4) 19-112-1615\* Deli - steel 4-legged frame, polypropylene shell w/ uph. seat

example 2:



- (6) 19-511-SA-356 Spino - uph. straight seat w/ back
- (4) 19-511-SA-322 Spino - uph. 90 degree outer curved seat w/ narrow back
- (1) 19-511-SA-622 Spino - uph. rectangular cap
- (2) 19-511-SA-623 Spino - uph. rectangular cap, 1 semi-circle end
- (4) 19-530-1103\* Tinnef - steel pedestal base + footplate
- (4) 19-326-1051\* Lola - steel frame

example 3:



- (3) 19-511-SA-356 Spino - uph. straight seat w/ back
- (1) 19-511-SA-357R Spino - uph. straight seat w/ back, right end module
- (1) 19-511-SA-358L Spino - uph. straight seat w/ back, left end module
- (2) 19-511-SA-331 Spino - uph. 90 degree inner curved seat w/ wide back
- (2) 19-511-SA-359 Spino - steel support leg compatible w/ straight modules
- (1) 15-560-7440\* Uni - rectangular laminate top w/ beveled edge, steel base

\*item numbers for pairings are specified in standard steel. All matching steel options are available.